



THE 2024

Recycler

La Crosse County

Solid Waste System

www.lacrossecounty.org/solidwaste

SERVING

La Crosse County WI,
Houston County MN, and
Surrounding Counties

**Please Keep
For Future
Reference!**

Mattress RECYCLING



1. When you purchase a new mattress, ask the local mattress store to recycle your old one; or
2. For home pick-up of an old mattress, without the purchase of a new one, contact a hauler that will recycle your mattress; or
3. Take your mattress to the Residential Drop-off area at the County Landfill for a fee or contact Hilltopper Refuse & Recycling at 608-783-6727, to find other drop-off locations.

Styrofoam Recycling

NEW:



New in 2024! The Department, in partnership with Hilltopper Refuse & Recycling and 7 Rivers Recycling, will be accepting Polystyrene (Styrofoam) foam for recycling. Standard disposal fees apply if dropped off at the landfill drop-off site.

Free drop off available at Hilltopper Refuse & Recycling. **Please call 608-783-6727.**

**For missed pick ups of
trash or recycling, please
call your waste hauler
or municipality.**

Landfill Hours of Operation:

Summer Hours:

April - Oct.

Monday – Friday:
6:30 AM – 4:30 PM
1st and 3rd Saturdays:
9:00 AM – Noon

Winter Hours:

Nov. - March

Monday – Friday:
7:00 AM – 4:00 PM

Office Hours and Reuse Room Hours:

Monday – Friday:
8:00 AM – 4:00 PM



Landfill Fees

All items dropped off will have a fee

Residential Drop-off Area: \$5 minimum or a \$120 per ton

- **Garbage** (normal household waste)
- **Large Items** (furniture, toys, bikes, stoves, grills, washers, dryers)
- **Demolition/Constuction** (wood, drywall, flooring, roofing, doors, windows, etc.)

Processing Pad: \$5 minimum or a per ton fee

For pricing visit: www.lacrossecounty.org/solidwaste

Landfill: \$15 permit fee and \$64 per ton

Mattresses & Boxsprings:

- Recycled: \$12 each + weight
- Landfill: \$18 each + weight

Freon Items: \$12 plus weight

(refrigerator, freezer,
air conditioner, de-humidifier)

Brush/Clean Wood: \$35/ton

(wood that has not been painted,
stained, or treated)

**We accept cash, check,
and credit/debit cards.
A fee will be added to use
credit/debit cards:**

- **\$1.95 on \$66.12 or less**
- **2.95% on \$66.13 or more**

WE ARE NOT AFFILIATED WITH ISLE LA PLUME

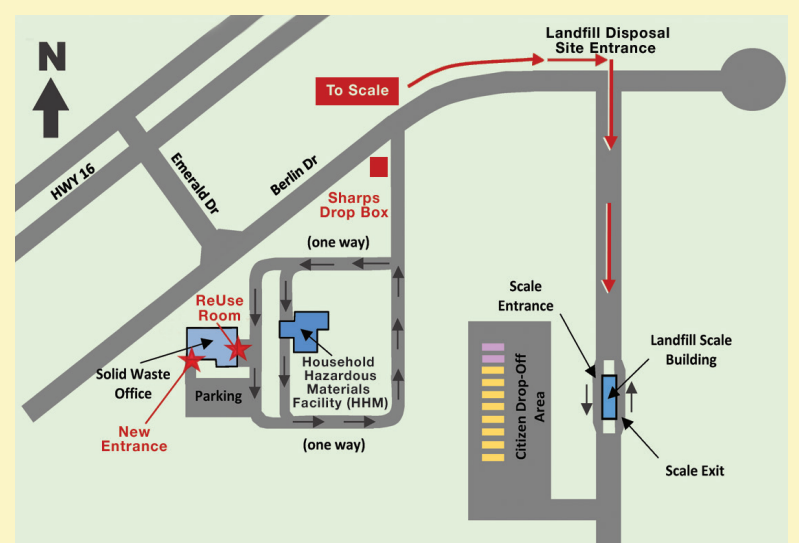
Only people authorized by site attendants may utilize the landfill facility. You must provide your own labor for unloading materials. Due to safety concerns, we do not permit salvaging once waste is placed into containers.

Information and Directions

PLEASE READ SIGNAGE

The Landfill's address is 3240 Berlin Drive. The diagram to the right illustrates the entrance to our facility (the landfill is the second right on Berlin Drive). The landfill entrance is equipped with inbound and outbound scales – all landfill customers must scale in and out. Department staff are available at the scale to direct you on disposal options and collection of payment.

For mailing, billing, and other departmental questions our office is located at 3200 Berlin Drive (first right on Berlin Drive) and parking is available on the south side of the building. We can also be reached at (608) 785-9572.



Landfill Disposal Site: 3240 Berlin Dr. La Crosse, WI 54601
HHM Disposal Site: 3202 Berlin Dr. La Crosse, WI 54601
Office: 3200 Berlin Dr. La Crosse, WI 54601
For questions please call 608-785-9572

Municipality Contacts:

La Crosse County
608-785-9572 www.lacrossecounty.org
Houston County
507-725-5800 www.co.houston.mn.us
City of La Crosse
608-789-7508 www.cityoflacrosse.org
City of Onalaska
608-781-9500 www.cityofonalaska.com
Town of Bangor
608-461-0554 www.townofbangor.com
Village of Bangor
608-486-4084 www.villageofbangor.com
Town of Burns
608-486-4272 www.townofburnswi.com
Town of Campbell
608-783-0050 www.townofcampbellwi.gov

Town of Farmington
608-857-3139 www.townoffarmingtonlax.org
Town of Greenfield
608-452-4700 www.greenfieldlaxwi.gov
Town of Hamilton
608-786-0989 www.townofhamiltonwi.org
Town of Holland
608-526-3354 www.townofhollandwi.gov
Village of Holmen
608-526-4336 www.holmenwi.com
Town of Medary
608-781-2275 www.townofmedary.com
Town of Onalaska
608-783-4958 www.townofonalaska.org
Town of Shelby
608-788-1032 www.townofshelby.com
Village of West Salem
608-786-1858 www.westsalemwi.gov

2 2024 Houston County Household & Business Waste — How to Dispose of it

Drop-off Site Locations

Houston

Sat. 8 AM–3 PM; Mon. 10 AM–6 PM

5154 County 9 (Go ¼ mile east on County 9 just off Hwy 76 north.)

Caledonia

Sat. 8 AM–3 PM; Wed. 10 AM–6 PM

14750 Richard's Road (Turn west off Hwy 44 by Evergreen Cemetery. Go approximately 1 mile; take private driveway off curve.)

Spring Grove

Sat. 8 AM–3 PM; Wed. 10 AM–6 PM

631 E. Main (East of Spring Grove on Hwy 44 at Houston County Highway Shop.)

Houston County Drop-off Site Locations



Sites for use only by Houston County Residents and Commercial Businesses. Residents of cities should contact their municipality for additional information on trash and recycling services.

La Crescent

Sat. 8 AM–3 PM; Thurs. 10 AM–6 PM

160 South 3rd St. (Take S. Chestnut St. to south side of large gray commercial building, cut through parking lot and cross railroad tracks to site.)

Hokah

Sat. 8 AM–3 PM; Tues. 10 AM–6 PM

5650 State 16 (Go 1 mile west of junction of Hwys 44 and 16 on Hwy 16.)

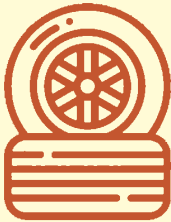


co.houston.mn.us

Drop-off Site Materials

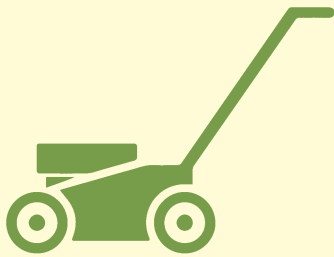
Charged Items (prices subject to change)

- Refuse (household garbage)
 - ~ 30 gal bag - \$2
 - ~ 45 gal bag - \$2.50
 - ~ \$2 min charge
- Demolition – the greater of \$0.15 per lbs. or \$18 per cubic yard
 - ~ e.g. sheetrock, shingles, concrete
- Large household items - the greater of \$0.15 per lbs. or \$18 per cubic yard
 - ~ e.g. furniture, carpeting
- Tires
 - ~ Auto off rim - \$2
 - ~ Auto on rim - \$8
 - ~ Semi/large truck/implement* off rim - \$10
 - ~ Tractor* off rim - \$20
 - ~ Oversized tires* off rim - \$65
 - *not accepted on rim
- Mattresses and box springs
 - ~ Clean/recyclable - \$5
 - ~ Wet/soiled/unrecyclable - \$15
- Appliances
 - ~ Camper refrigerator (gas or ammonia) - \$20
 - ~ Uncleaned refrigerator - \$50



Free Items for Residents (fees may apply to businesses)

- Metal items
 - ~ e.g. lawn mowers, bed springs
- Appliances (emptied & cleaned)
 - ~ e.g. cleaned refrigerator
- E-Waste
 - ~ e.g. televisions, computers, electronics
- Rechargeable batteries
- Recyclables
 - ~ e.g. glass, tin cans, plastic # 1 -2, and paper/fiber products (descriptions available on page 3)



PLEASE NOTE: Drop Site Supervisors will determine proper management of items – charges may apply.

NEW:

Yard Waste

Each city has its own yard waste policies and programs. Contact your city hall for information.

Brownsville	Caledonia	Eitzen	Hokah	Houston	La Crescent	Spring Grove
507-482-6732	507-725-3450	507-495-3017	507-894-4990	507-896-4033	507-895-2595	507-498-5221

Household Hazardous Waste (HHW)

NEW:

For 2024, Houston County is revising the Household Hazardous Waste (HHW) collection events.

We will be collecting residential paints and pesticides as usual at the April Residential Clean Sweep Event (see information on the bottom of Page 3) but items considered to be hazardous wastes will not be accepted and you will be directed to the La Crosse County Household Hazardous Materials (HHM) Facility located at 3202 Berlin Drive, La Crosse, WI.

Houston County in cooperation with La Crosse County Solid Waste program will be offering \$30.00 vouchers for disposal of household hazardous wastes. One voucher per resident, per year can be obtained from the Environmental Services Department. The program will start in early 2024.



Please contact us at:

Houston County
Environmental Services

304 South Marshall Street - Room 209
Caledonia, MN 55921
(507) 725-5800

www.co.houston.mn.us/departments/environmental-services/

What Can Be Recycled?

GLASS	TIN CANS	PLASTICS	PAPER/FIBER PRODUCTS
<ul style="list-style-type: none">Food and beverage glass only (soda, beer, wine and liquor bottles; food containers) <p><i>Rinse clean and discard metal or plastic caps. Labels can remain..</i></p> <p>NO broken glass, window glass, mirrors, light bulbs, dishes, ceramic dishes or beer/wine caps, flower pots, crystal, heat-resistant ovenware, drinking glasses.</p>	<p><i>Rinse clean and flatten if possible. Labels can remain.</i></p> <p>NO aerosol cans.</p> 	<ul style="list-style-type: none">Empty bottles and jugs with necks. Number 1 or number 2 code must be stamped on the bottom of the container—for example, milk jugs and pop bottles. <p><i>Remove and discard caps. Drain, rinse, and flatten.</i></p> <p>NO plastic bags or wrap, film containers, plastic pails, dishes, bubble wrap, storage baskets, flower pots.</p>	<ul style="list-style-type: none">Office paper, computer paper: Envelopes can have labels.Corrugated cardboard, cardboard egg cartons, cereal and juice boxes: <i>Flatten</i>. NO styrofoam egg cartons.Newspapers (including glossy inserts), phone booksBooks: <i>See Alternative Recycling Sources</i>Magazines, catalogsBrown paper bags 


Alternative Recycling Sources

<ul style="list-style-type: none">Eyeglasses and hearing aids: <i>Lions Clubs</i>. Deposit in containers around town.Beverage pull tabs: <i>Ronald McDonald Homes</i>. Deposit in containers around town.Greeting cards (front only): <i>St. Jude's Children's Ranch for Children</i>, 100 St. Jude Street, Boulder City, NV 89005 www.stjudesranch.org	<ul style="list-style-type: none">Household items and furnishings (clean, in good condition): <i>Bluff Country Family Resources</i>. Call 507-894-2676. Tax receipt provided.Household items and construction materials <i>Habitat for Humanity Restore</i> La Crosse 608-785-2373 Winona 507-474-6075	<ul style="list-style-type: none">Used Christmas Lights - La Crosse Rotary Lights: There is a large dumpster in the park in the circle at the end of State Street during rotary lights. Feel free to put any light strings you would like to recycle in this dumpster. If you would like to recycle sooner, there is a tray outside the door at their warehouse year round at 27 Market St, La Crosse, WI. The tray is by the Market Street door. www.rotarylights.org/light-string-recycling.html	<ul style="list-style-type: none">Agricultural silage plastics and Bale Plastic Bags: For further information on this disposal, please contact Revolution Plastics at 844-490-7873 or www.revolutioncompany.comUsed oil, oil filters, antifreeze: Local oil stations (call first).
--	---	---	---



General Trash (Nonrecyclable)

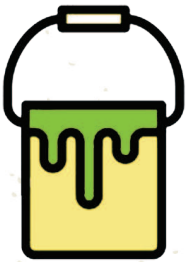
out!

Paper, plastic, glass, styrofoam & household trash			
NONRECYCLABLE PAPER	NONRECYCLABLE PLASTIC	STYROFOAM	NONRECYCLABLE GLASS
<ul style="list-style-type: none">• Kleenex, paper towels, napkins• Self-carbon paper (NCR)• Posters/tagboard• Padded shipping bags• Wax paper/coated paper• Gift wrap/bags	<ul style="list-style-type: none">• Plastic containers marked #3-7• Plastic containers (film, pill, ice cream, paint)• Plastic wrap/bags/gift bags/bubble wrap• Dishes/eating utensils<ul style="list-style-type: none">• Toys• Credit/calling cards<ul style="list-style-type: none">• Flower pots• Storage baskets<ul style="list-style-type: none">• 12-pack beverage containers	<ul style="list-style-type: none">• Coolers• Insulation• Packing peanuts• Egg cartons• Fast-food containers• Cups <div></div>	<ul style="list-style-type: none">• Broken glass• Window glass• Mirrors• Light bulbs (nonfluorescent)• Cooking/ovenware• Beverage glasses
BATTERIES	CERAMICS	<div>SEE LA CROSSE COUNTY SECTION OF FLYER</div>	DEER CARCASSES
<ul style="list-style-type: none">• Regular alkaline, manganese, and carbon-zinc batteries	<ul style="list-style-type: none">• Ceramic items• Clay flower pots• Dishes		<ul style="list-style-type: none">• Deer Carcasses are not accepted at any drop site in Houston County. MN DNR dumpster locations are updated yearly, watch for signs at the drop sites or call 1-888-646-6367.

Disposing of Paint

Paint is not accepted at drop sites. Empty or hardened paint containers can be disposed of in the regular trash. Leftover and unwanted paint can be disposed of throughout the year through the Paintcare program – visit paintcare.org for information.

During the Residential Clean Sweep Events only, County residents can dispose of paint. Acceptable items in containers 1 gallon or smaller are no charge. Businesses should contact the County for additional information.



Pharmaceutical Drop-Off

Medications are not accepted at drop sites. Medications can be disposed of in drop boxes located at the Houston County Sheriff's Office and the La Crescent Police Department throughout the year.

Please refer to Page 4 under "Sharps & Needles" or contact your health care provider for proper disposal of sharps and needles.



Residential Clean Sweep Event - FREE EVENT!

Saturday, April 27, 2024 - 9:00 a.m. to 2 p.m.

Recycling Center – 105 North Grant Street, Houston, MN

Household Fluorescent and HID Bulbs

Household Latex and Oil Base Paints – 1 Gallon or Smaller

Residential or Ag Chemicals – Limit 200 lbs.

Please see Houston County website under Environmental Services for more information: www.co.houston.mn.us/departments/environmental-services/

Businesses should contact Houston County at (507) 725-5800 for disposal questions.



You can scan for information

THE 2024 La Crosse County • WI Recycler

For answers to questions, call
La Crosse County HHM program, 608-785-9999
or visit our Website: www.lacrossecounty.org/solidwaste/hhm

Household Hazardous Materials Facility (HHM)

Free for La Crosse County, WI residential users (unless otherwise noted below)
Houston County, MN and surrounding counties (Fees apply to all acceptable items)

Acceptable Materials

- Automotive fluids
- Batteries (rechargeable, lead acid, lithium)
- Cell phones and digital cameras
- Cleaning products
- Computers (desktops, laptops, tablets)
- Computer peripherals (fax machines, hard drives, keyboards, mice, printers, scanners, speakers)
- Fluorescent light bulbs
- Lawn and garden chemicals
- Medications (non-controlled only)
- Mercury-containing devices (barometers, thermometers, thermostats, etc.)
- Microwaves and small Freon appliances **Fees Apply**
- Paints, stains, varnish and solvents
- Pool chemicals
- Propane cylinders (20# and under)
- Sharps and needles
- Smoke detectors
- TVs and computer monitors **Fees Apply**
- Vape pens/E-cigarettes
- Video devices (cable and satellite receivers, DVD players, gaming consoles, VCRs, etc.)
- Water filters (Point of Contact)

Non-Acceptable Materials

- Compressed gas cylinders (other than propane)
- Controlled substance medications
- Explosives (inc. black powder, fireworks, military munitions, and flares)
- Shock sensitive materials (picric acid, etc.)
- Radioactive materials

SAVE YOURSELF A TRIP!

These items can and should go into your regular curbside trash or recycling:

- Alkaline batteries (trash)
- Dried out paint (trash)
- Empty paint and aerosol cans (recycle)
- Fertilizer without pesticide (trash)
- Ice melt and rock salt (trash)
- Incandescent light bulbs (trash)



Preparation & Transportation

Residential Drop-Off Hours

Monday – Friday (year-round): 8:00 a.m. – 4:00 p.m.
1st and 3rd Saturdays (April – October): 9:00 a.m. – Noon

Businesses and organizations by appointment only.

Fees apply to all items for residents who live outside of La Crosse County.

FREE PRODUCT REUSE ROOM!

Over 80,000 pounds of useable household products are sorted and made available to the public in our Reuse Room annually. All items are free, but donations are appreciated. The Reuse Room is open Monday – Friday from 8 AM to 4 PM. The Reuse Room is located on the east side of the landfill office building, directly adjacent to the HHM Facility.

Safe Transportation of Hazardous Materials

1. Never mix chemicals.
2. Bring items in original containers or clearly mark contents. Tell facility technician if you are unsure what is in a container.
3. Tighten all covers and lids.
4. If a container is leaking, pack it separately in a leak-proof pail or tub.
5. Avoid spills. Place waste containers upright and place securely in the trunk or back of a truck or van. Do not transport waste containers in vehicle passenger areas.
6. Gasoline should be transported in a designated red safety container.
7. Motor oil should be transported in a durable and leak-proof container labeled with the words "Used Oil."
8. Tape the terminal ends of batteries with clear tape to prevent arcing. Do not co-mingle batteries with chemicals.
9. Transport fluorescent bulbs securely to avoid breakage. Do not tape bulbs together.
10. Upon arrival, pull under the HHM canopy and remain in your vehicle with the engine shut off.



3202 Berlin Drive • La Crosse, WI 54601

Sharps & Needles



- Needles, syringes, auto-injectors (EpiPens) and lancets must be transported in sealed, puncture-resistant containers.
- Container options include a standard red sharps container or a thick plastic laundry detergent bottle with screw on cap. All containers must be labeled with the word **"SHARPS."**
- Additional sharps collection sites can be found on the Alliance to HEAL website.
- For after-hours service, a red sharps drop box is located on Berlin Drive at the La Crosse County Solid Waste Department entrance. This drop box accepts single-use needles as well as small sharps containers. (see map above)

Use By Businesses & Organizations

The La Crosse County HHM Program is available to assist small businesses and organizations with their hazardous material disposal needs. For more information, call us at (608) 785-9999 or visit our website to download a VSQG qualification packet.

www.lacrossecounty.org/solidwaste/hhm